



document sciences

Visual CompuSet Professional Edition™

Rapid Application Development (RAD) Solution for Personalization of Print, Web, and E-mail Content

Visual CompuSet Professional Edition™ (VC Pro) offers a Rapid Application Development (RAD) environment to design customized, full color data-intensive documents. From a visual interface for document design, a single source application may be deployed in both print and electronic formats to create dynamic, on-demand, personalized content. Using either a design layout view or object-oriented, tree-directed model, users can apply business rules to document elements to create variable, high quality content without writing code. VC Pro's powerful data processing and composition capabilities make it optimal for producing financial statements, benefit statements and marketing fulfillment pieces to be delivered in print, Web, or e-mail formats.

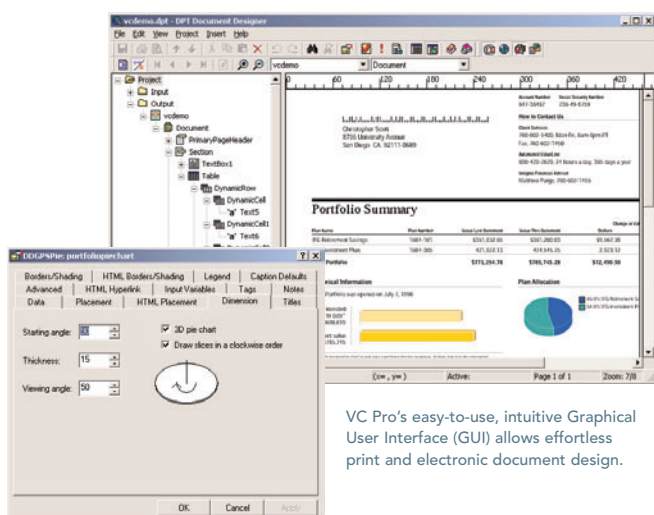


VC Pro is a modular development environment with optional components depending on business needs. The VC Pro API enables composing and printing documents directly from existing front-end GUIs. The VC Pro Concurrent Composer is ideal for transactional production environments, enabling document applications to be executed concurrently, and from within other applications. The

development environment itself is Windows based. Print production is supported on Windows®, UNIX®, and mainframe platforms.

Key Features and Benefits of VC Pro:

- RAD environment with feature-rich GUI reduces IT costs and decreases time to market
- Flexible output formats allow customer preferred delivery options to be met
- Fidelity between print and electronic formats from a single application and data source reduces development time
- Advanced data processing and composition capabilities create complex print and PDF documents from business data and rules
- Concurrent execution of document applications enables transactional processing
- An API provides flexibility to utilize user-developed front-end GUIs



VC Pro's easy-to-use, intuitive Graphical User Interface (GUI) allows effortless print and electronic document design.

Components and Compatibility

Operating Requirements

Visual CompuSet™

Windows® 2000 Server, 2000 Professional, 2003 Server or XP Professional

- Intel® Pentium® III processor, 500 MHz
- 512 MB RAM
- Parallel or USB port required
- SVGA monitor with resolutions of 800x600x256 minimum
- 400 MB of available hard disk space for product installation
- Additional 3-4 GB of hard disk space for application files

Visual CompuSet™ with Data Prep Tool™

Development Environment

Windows® 2000 Server, 2000 Professional, 2003 Server or XP Professional

- Intel® Pentium® III processor, 500 MHz
- 512 MB RAM
- Parallel or USB port required
- SVGA monitor with resolutions of 800x600x256 minimum
- 400 MB of available hard disk space for product installation
- Additional 3-4 GB of hard disk space for application files

Production Environment

- Windows® 2000 Server, 2000 Professional, 2003 Server or XP Professional, or
- HP® UNIX® v11.0 or v11i, IBM AIX® v5.1, v5.2 or v5.3, or Sun Solaris™ v8.0 or v9.0 or
- IBM z/OS® v1.3, v1.4, v1.5 or v1.6

Visual CompuSet Professional Edition™ with DPT Document Designer™

Development Environment

Windows® 2000 Server, 2000 Professional, 2003 Server or XP Professional

- Intel® Pentium® III processor, 500 MHz
- 512 MB RAM
- Parallel or USB port required
- SVGA monitor with resolutions of 800x600x256 minimum
- 400 MB of available hard disk space for product installation
- Additional 3-4 GB of hard disk space for application files

Production Environment

- Windows® 2000 Server, 2000 Professional, 2003 Server or XP Professional or
- HP® UNIX® v11.0 or v11i, IBM AIX® v5.1, v5.2 or v5.3, or Sun Solaris™ v8.0 or v9.0 or
- IBM z/OS® v1.3, v1.4, v1.5 or v1.6

Visual CompuSet Professional Edition™ with VC Pro Web Delivery

Development Environment

Windows® 2000 Server, 2000 Professional, 2003 Server or XP Professional

- Intel® Pentium® III processor, 500 MHz or better
- 512 MB of RAM
- 17-inch SVGA monitor
- 400 MB of available hard disk space for product installation
- Additional 3-4 GB of hard disk space for application files

Web Production Environment

- Windows® 2000 or XP Professional or 2000 Advanced Server

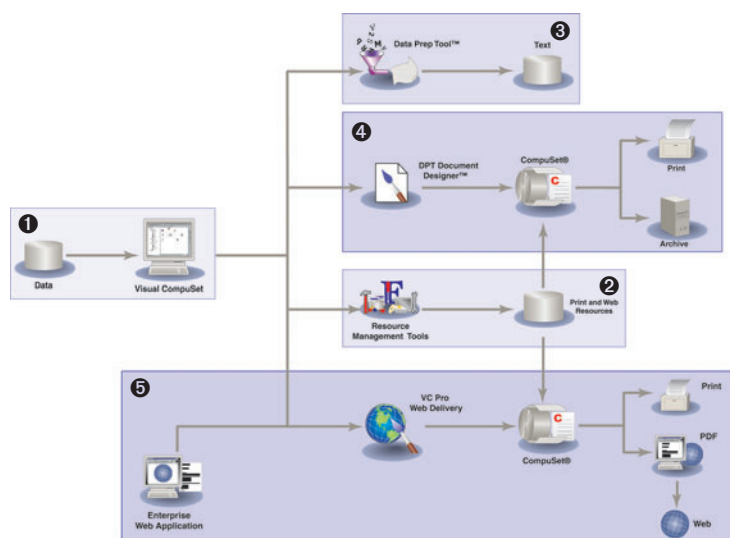
Print Production Environment

- Windows® 2000 Server or 2000 Advanced Server or 2000 Professional, 2003 Server or XP Professional or
- HP® UNIX® v11.0 or v11i, IBM AIX® v5.1, v5.2 or v5.3, or Sun Solaris™ v8.0 or v9.0

1 **Visual CompuSet™** is a design environment that simplifies and expedites the document development process. Consisting of several project and resource management modules, Visual CompuSet is the document design interface for data preparation, document design, and output proofing of multiple print formats. Visual CompuSet contains a project management component, which defines and manages the steps and resources of a Content Automation process. A Visual CompuSet API is also available, enabling end users to access viewing capabilities of Visual CompuSet from within user-developed front-end applications.

2 **Resource Management Tools** provide a suite of GUI tools to manage document fragments, images, signatures, logos, forms, and fonts used in an application. These tools allow import and export of resources between different computing platforms (PC, UNIX, and mainframe). Other features include a GUI interface to printer-unique options as well as document finishing and post-processing.

3 **The Data Prep Tool™ (DPT)** is a GUI programming application for data manipulation. It allows you to transform and manipulate input data from multiple data sources including databases and flat files, generating an output data source for your Content Automation application. DPT generates an error-free standard ANSI COBOL® program from GUI instructions featuring powerful functions, advanced logic capabilities, and an open architecture for customization. Used in conjunction with the VC Pro Concurrent Composer, document applications created



with the DPT can be executed concurrently and from within other applications, enabling both multiple concurrent transactional processing and multiple concurrent batch runs.

4 **DPT Document Designer™** combines all the power of the Data Prep Tool with an easy-to-use GUI for document definition and layout. It offers support for advanced document features including full color data-driven graphics, images, multi-columning, page n of m numbering, widow and orphan control, and more. DPT Document Designer features full control over a document's appearance and advanced page logic. Business rules and requirements are equated to document elements using data-driven logic to make all output personalized and variable. Its open architecture makes any application fully customizable. By adding the VC Pro Concurrent Composer, document applications created with the DPT Document Designer can be executed concurrently and from within other applications, enabling both multiple concurrent transactional

processing and multiple concurrent batch runs.

5 **VC Pro Web Delivery** VC Pro Web Delivery enables the design, creation and distribution of complex print documents in addition to producing electronic PDF documents for email delivery or Web site postings. From a single VC Pro Web Delivery application, the same data source may be used to create identical output in PDF formats and traditional print formats (e.g. PostScript, AFP, Metacode, or PCL), maintaining the same fidelity in presentation for both print and electronic documents. Deployment of VC Pro Web Delivery on an existing enterprise Web server allows the creation of customized content in an on-demand fashion to support both Intranet and Internet requirements.

5958 Priestly Drive
Carlsbad, CA 92008
800.420.2620
760.602.1400
760.602.1450 FAX
www.docscience.com

For more information on
Visual CompuSet Professional Edition,
contact 800.420.2620 or email
info@docscience.com.



document*sciences*